

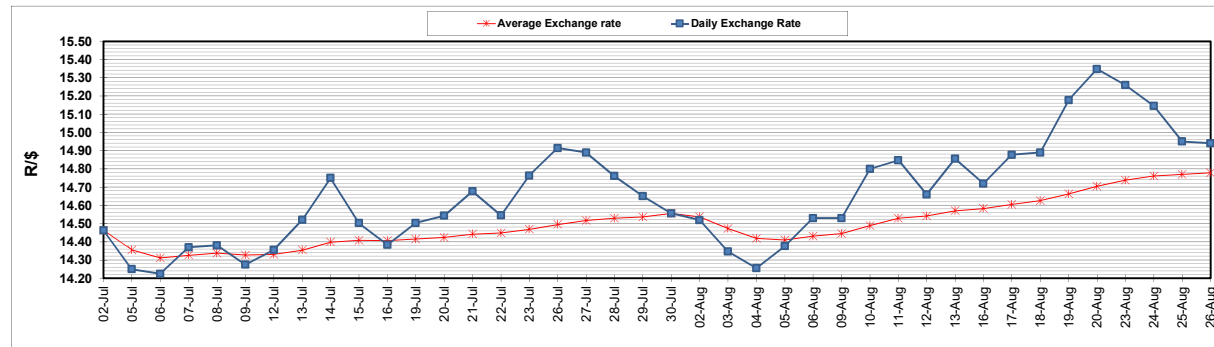
	PETROL 95 ULP	PETROL 93 ULP & LRP	DIESEL 0.05%	DIESEL 0.005%	ILL. PAR.
GAUTENG PUMP PRICE (SA c/l) AS FROM 04/08/2021	1,830.000	1,811.000	-	-	-
WHOLESALE PRICE (SA c/l) AS FROM 04/08/2021	-	-	1,564.200	1,566.600	963.488
SINGLE NATIONAL MAXIMUM RETAIL PRICE	-	-	-	-	1,217.000
BASIC FUEL PRICE - 26/08/2021 (SA c/l)	807.364	796.504	745.491	747.736	744.331
PRESS RELEASE CONTRIBUTION TO BFP 04/08/2021 - 26/08/2021 (SA c/l)	827.590	818.590	770.630	773.030	750.128
UNIT OVER/(UNDER) RECOVERY - 26/08/2021 (SA c/l)	20.226	22.086	25.139	25.294	5.797
AVERAGE BASIC FUEL PRICE 30/07/2021 - 26/08/2021	803.976	791.276	738.959	741.925	726.907
AVERAGE UNIT OVER/(UNDER) RECOVERY 30/07/2021 - 26/08/2021	10.951	14.651	24.321	23.905	15.721

### ANALYSIS MOVEMENT OF AVERAGE OVER/(UNDER) RECOVERY

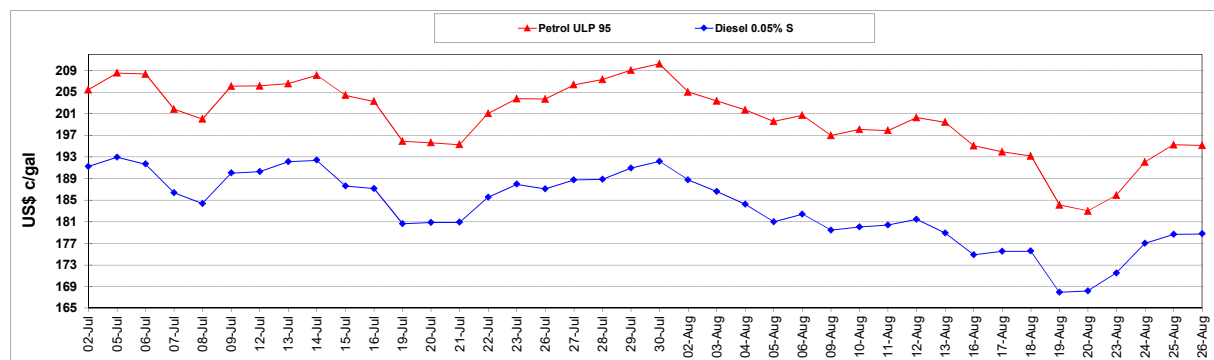
	PETROL 95	PETROL 93	DIESEL 0.05%	DIESEL 0.005%	ILL. PAR.
- MOVEMENT IN INTERNATIONAL PRODUCT PRICES	24.181	27.672	36.481	36.114	27.683
- MOVEMENT IN EXCHANGE RATE	(13.230)	(13.021)	(12.160)	(12.209)	(11.962)
AVERAGE UNIT OVER/(UNDER) RECOVERY 30/07/2021 - 26/08/2021	10.951	14.651	24.321	23.905	15.721

### R/\$ EXCHANGE RATE - (R/\$14.9400- 26/08/2021)

### EXCHANGE RATE USED IN BASIC FUEL PRICE



### INTERNATIONAL PRODUCT PRICES OF BASKET USED IN BASIC FUEL PRICE



### BASIC FUEL PRICE IN SA CENTS PER LITRE

